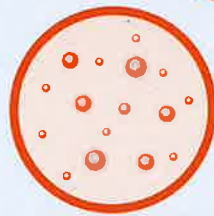


注意 猴痘

你該這樣做

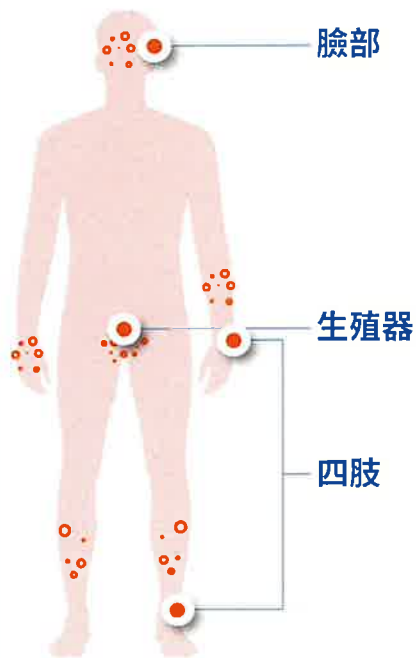


國內已有本土猴痘案例，民眾若前往流行地區或國內高風險場域，應避免與不特定人士親密接觸。



如有任何疑似症狀，請佩戴口罩並立即就醫告知旅遊史、高風險場域暴露史與接觸史。

+ 症狀好發部位



+ 猴痘症狀

出現不同型態的皮膚病灶，如：皮疹、水泡、膿疱



+ 可能伴隨症狀



衛生福利部疾病管制署
TAIWAN CDC



www.cdc.gov.tw



1922防疫達人
www.facebook.com/TWCDC



Taiwan CDC
LINE@

廣告

Mpox Alert:

Here's What You Should Do

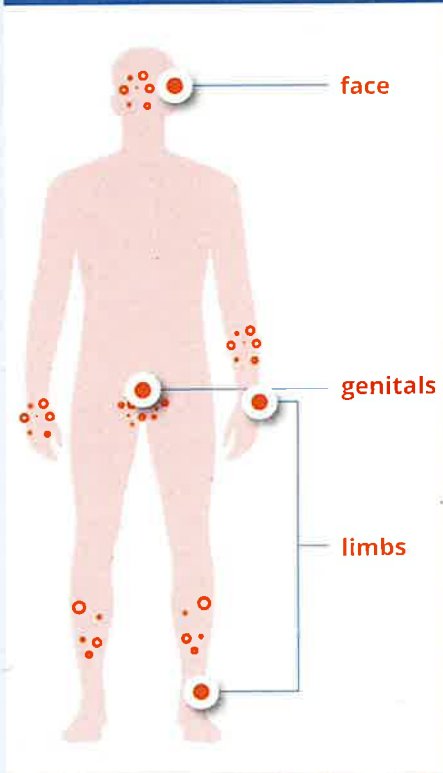


There have been cases of Mpox reported in Taiwan. If you're planning to travel to areas with high prevalence or high-risk premises venues, avoid close contact with unknown people.



If you experience any symptoms, wear a mask and seek medical attention immediately. Inform your doctor about your travel history, history of exposure to high-risk premises venues, and contact history.

+ Symptom onset site :



+ Symptoms of Mpox :

Include the appearance of various skin lesions such as rashes, blisters, and pustules on the face, limbs, and anogenital region.



+ Other possible symptoms :



衛生福利部疾病管制署
TAIWAN CDC



www.cdc.gov.tw



1922防疫達人
www.facebook.com/TWCDC



Taiwan CDC
LINE@